



ENTSOG 12th Transparency Workshop

appygas – the gas market made easy

Caroline Aumeran – Head of Product

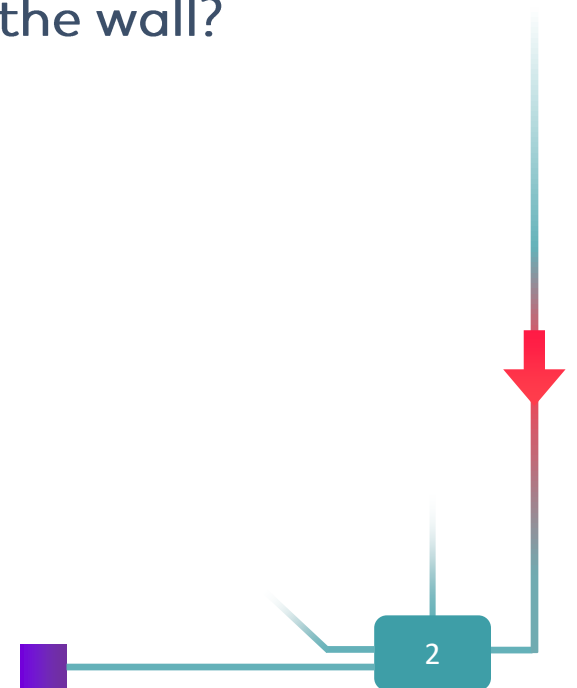
Vienna 28.11.2018



Current State of Affairs



Wouldn't you say that
working in the gas industry
sometimes feels like you're
banging against the wall?



We have good news for office walls and heads!

Nov 2016



The idea was born



Test of prototype on the market

Sept 2017



Start of IT development



Feb 2018



Product Launch at E-World



Nov 2018



200 companies registered and customers in London, Paris, Geneva, Germany...

A 4-month high-speed development and launch only made possible thanks to ENTSOG's public and reliable data



1. Appygas in a nutshell

Our solution to make the gas market easy to understand



FLOWS MAP

Grasp and analyse near-realtime data quickly and work more effectively and efficiently



ROUTE CALCULATOR

Identify trading opportunities easily and react to the spreads more swiftly and efficiently



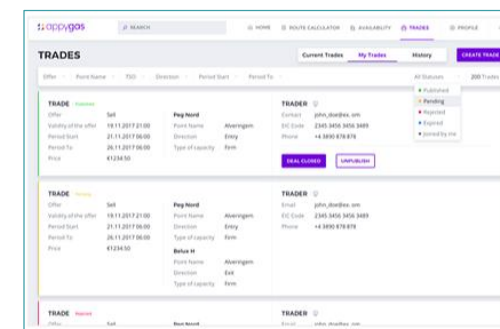
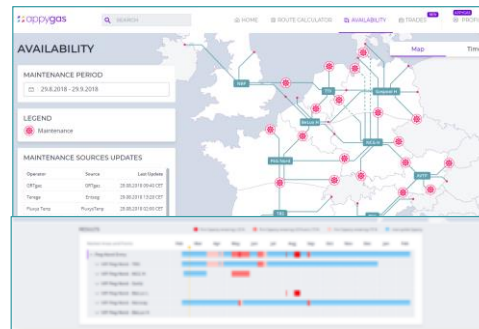
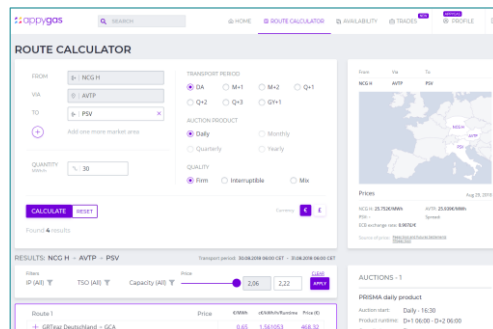
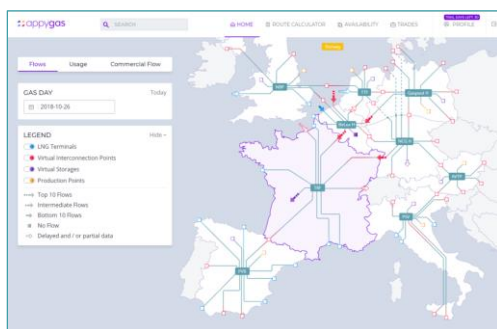
AVAILABILITY

Anticipate the maintenance and take it into account when making trade decisions



TRADES

Boost your trades on the secondary market by getting in touch easily with other gas market players



as a source



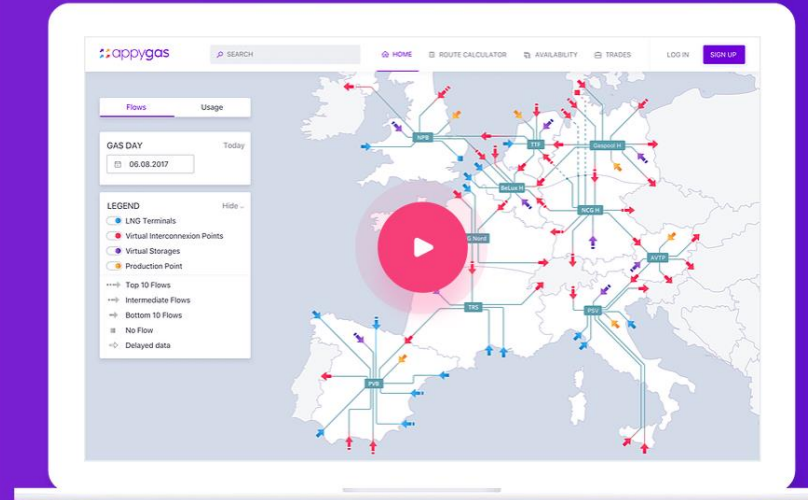
as a source

Video

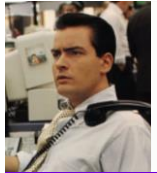
THE GAS MARKET MADE EASY


The platform which provides you
with all relevant European gas
market data.

Try it for Free




Added value for shippers and traders





FOR TRADERS
Work more efficiently

Get all fundamentals at a glance

- don't miss a trade opportunity through better and faster market understanding and appygas alerts




FOR PORTFOLIO MANAGERS
Optimize your portfolio

Improve your booking strategy

- improve your booking strategy taking into account all parameters (exact fee, prisma auctions analysis, maintenance monitoring...)




FOR BUSINESS ANALYSTS
Deliver pertinent analysis to the team

Share pertinent analysis with the team

- better history analysis and forecast through accurate, reliable, aggregated and physical data, anytime



2. Deep-dive into our modules



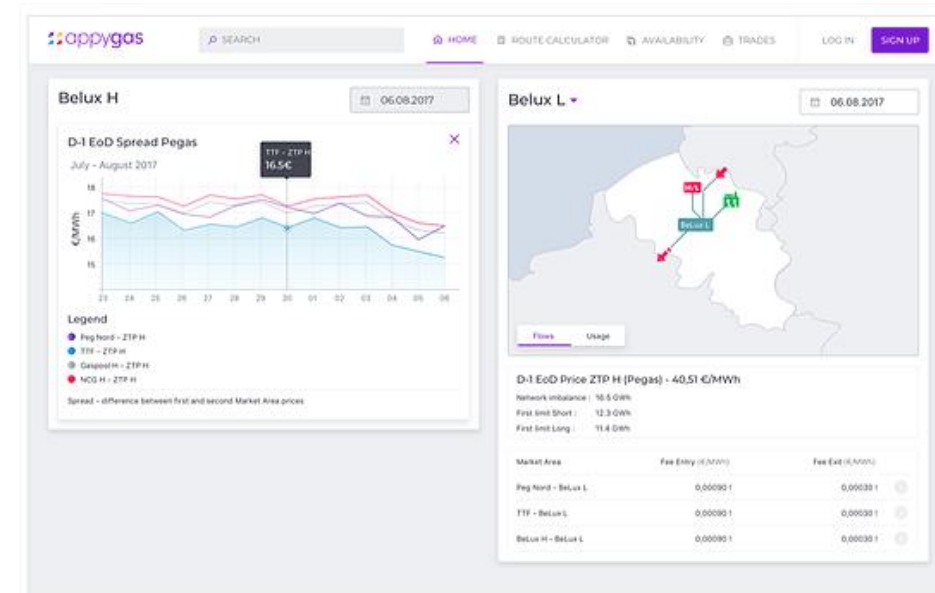
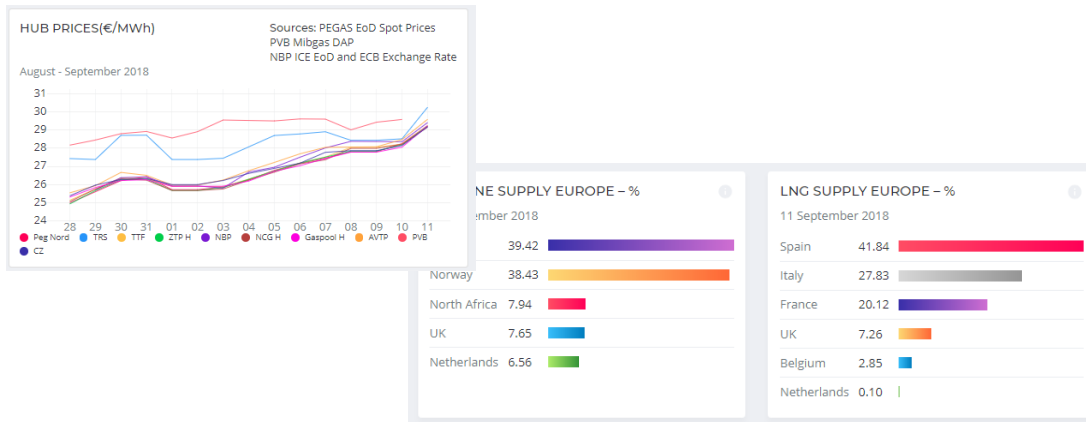
Flows Map: get the big picture



FLOWS MAP

Grasp and analyse near-realtime data quickly and work more effectively and efficiently

- 9 market areas covered: now with Gaspool, AVTP and PSV
- near real-time data for VIP, storages, production points and LNG terminals, from the market area to the physical level
- widgets with spot prices, pipeline and LNG supply in Europe



Route Calculator: improve your booking strategy



ROUTE CALCULATOR

Identify trading opportunities easily and react to the spreads more swiftly and efficiently

- get all alternative routes from A to B
- filter the results with your own criteria
- compare spread and transport fee
- display last PRISMA auction results
- never miss an auction again

ROUTE CALCULATOR

FROM: NCG H
VIA: AVTP
TO: PSV

TRANSPORT PERIOD: DA, M-1, M-2, Q-1, Q-2, Q-3, GY+1
AUCTION PRODUCT: Daily, Monthly, Quarterly, Yearly
QUALITY: Firm, Interruptible, Mix

QUANTITY: 1

CALCULATE **RESET**

Found 7 results

RESULTS: NCG H - AVTP - PSV

Transport period: 01.11.2018 06:00 CET - 01.12.2018 06:00 CET

Filters: IP (All), TSO (All), Capacity (All), Price: 1.47 - 2.00

Route 1

IP's	TSO	Capacity	PriceType	Price	€/MWh	c€/MWh/Runtime	Price (€)
Bayernets - GCA							
Überacker2	Bayernets	BDK	Reserve Price	0.01	0.553300		5.55
Überacker2	Bayernets	BDK	Extra Terms	0.03	2.126220		21.26
Überacker2	GCA	FDK	Reserve Price	0.16	11.217600		112.18
Past auction capacity: 01.08.2018							
PRISMA							
Total Subroute Price: 0.19 13.899120 138.99							
TAG - SNAM							
Price: 1.28 91.980285 919.80							

Prices

From: NCG H, Via: AVTP, To: PSV

Prices: NCG H: 29.574€/MWh, AVTP: 29.850€/MWh, PSV: 31.368€/MWh, Spread: 1.7941

ECB exchange rate: 0.89364€

Source of price: [EnergyStart and Futures Settlements](#)

AUCTIONS - 1

PRISMA monthly product

Auction start: 15.10.18 09:00

Product runtime: 01.11.18 06:00 - 01.12.18 06:00

Capacity type: Firm

[Remind me](#) [Link to the auction](#)

[Download all results](#) [PRISMA Platform](#)

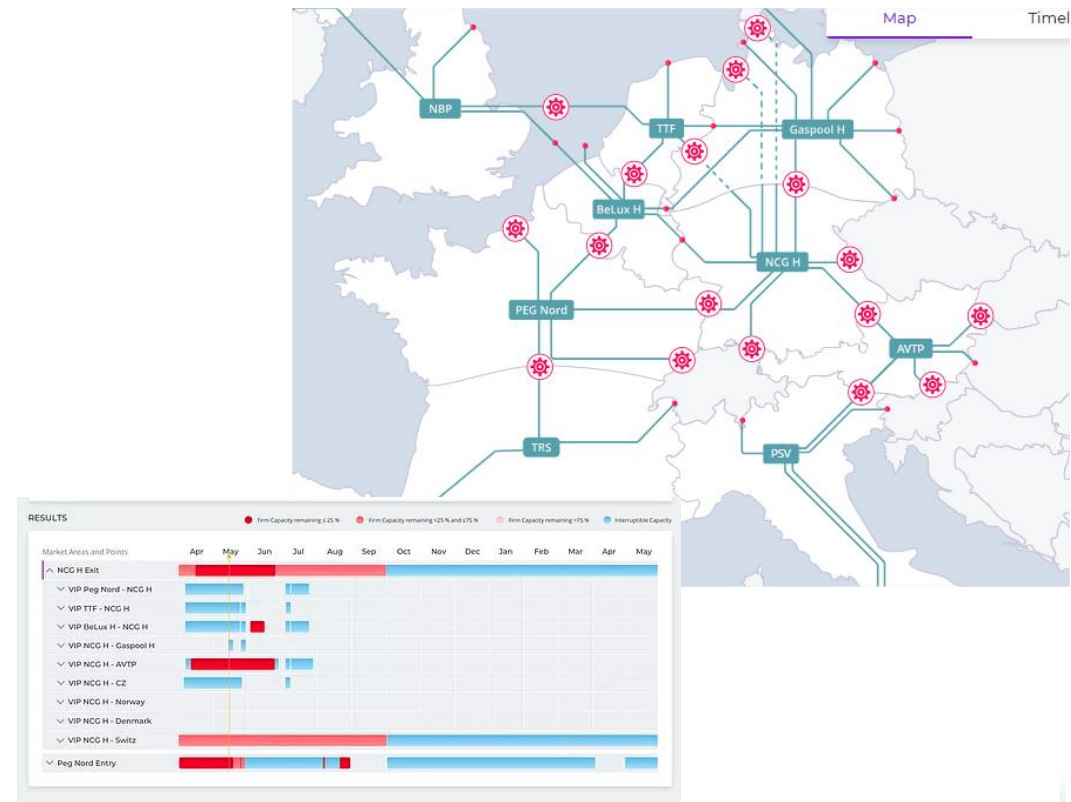
Availability: upcoming maintenance, anytime



AVAILABILITY

Anticipate the maintenance and take it into account when making trade decisions

- monitor the upcoming works on your portfolio
- check the usage of your network points with the Flows Map to anticipate congestion



Trades: boost the secondary market



TRADES

Boost your trades on the secondary market by getting in touch easily with other gas market players

- create an offer to sell or buy transport capacities
- publish your offer
- stay anonymous or not
- get in touch with other gas market players
- close the deal on PRISMA

TRADES

Please note that all published trades are non-binding.
appygas merely serves as a means of communication for market participants. Pursuant to Section 12 (2) GasNZV, any assignment of capacity or transfer of use will be exclusively performed via PRISMA.

Offer ++ | Point Name ++ | TSO ++ | Start Day ++ | End Day ++

All Directions ▾ | All Statuses ▾ | 2 Trades

TRADE Rejected

Offer

Sell

Validity of the offer

24.04.2018 06:00

Start Day

05.05.2018 06:00

End Day

11.07.2018 06:00

Price

€/MWh 10

Quantity (MWh/h)

30

Type of trade

Transfer of Use

TSO

GRTD

Point Name

Medelsheim

Direction

Exit

Type of capacity

Interruptible

TSO

GRT

Point Name

Obergailbach

Direction

Firm

Type of capacity

Firm

TRADER

Email

maryline@appygas.com

EIC Code

2120000000001208

Reason of rejection:

sorry

EDIT THIS TRADE

TRADE Rejected

Offer

Sell

Validity of the offer

21.04.2018 06:00

Start Day

31.05.2018 06:00

End Day

06.06.2018 06:00

Price

€/MWh 12

Quantity (MWh/h)

30

Type of trade

Transfer of Use

TSO

GRT

Point Name

medelsh

Direction

Exit

Type of capacity

Firm

TRADER

Email

maryline@appygas.com

EIC Code

2120000000001208

Reason of rejection:

EDIT THIS TRADE

Our solution is based on reliable data

our data are

- accurate
- harmonized
- reliable
- near real-time
- transparent
- at your fingertips

- 100,000 data crawled per day
- more than 40 sources
- up to 4 sources per variable
- priorities of sources according to the best quality

Usage of ENTSOG TP API as a data source

- ❑ Fundamental source for our Flows Map and Maintenance modules
- ❑ 120 queries per run
- ❑ New run every 3 hours, soon hourly
- ❑ 12,000 raw data called per run
- ❑ Primary source for 2 out of 9 market areas (TTF and GPL) and partially for the maintenance module
- ❑ Second or third source for all data of these modules



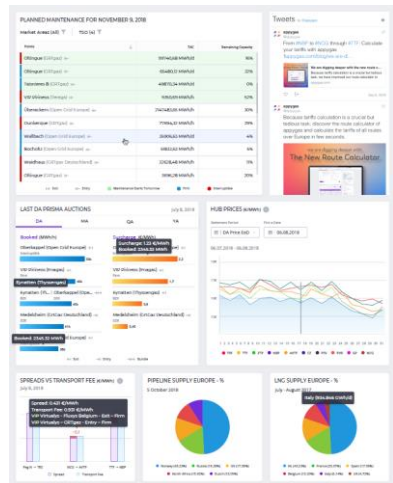


3. Stay tuned... more coming soon!

...to be continued in 2019

Next releases

Dashboard



API and download



The interface shows a multi-step process for selecting market area, point type, and variables, followed by a results preview table.

STEP 1. SELECT MARKET AREA

STEP 2. SELECT POINT TYPE

STEP 3. SELECT POINTS

STEP 4. SELECT VARIABLES

STEP 5. SELECT TIME PERIOD AND FILE FORMAT

Period: 17.04.2018 - 17.05.2018 | File Format: CSV | XLSX

Time Range: 17.04.2018 - 17.05.2018 | File Format: XLSX | CSV

Results preview

Key	Value	Name of the asset	Name of the operation	Name of the variable	Value	Unit	Source	Timestamp (UTC)
17.04.2018	21760	Spain - Litoral	Storage	Replenishment Entry	129	km³	Storage	17.04.2018 10:00:00
17.04.2018	21760	Spain - Litoral	Storage	Replenishment Entry	129	km³	Storage	17.04.2018 10:00:00
17.04.2018	21760	Spain - Litoral	Storage	Replenishment Entry	129	km³	Storage	17.04.2018 10:00:00
17.04.2018	21760	Spain - Litoral	Storage	Replenishment Entry	129	km³	Storage	17.04.2018 10:00:00
17.04.2018	21760	Spain - Litoral	Storage	Replenishment Entry	129	km³	Storage	17.04.2018 10:00:00
17.04.2018	21760	Spain - Litoral	Storage	Replenishment Entry	129	km³	Storage	17.04.2018 10:00:00
17.04.2018	21760	Spain - Litoral	Storage	Replenishment Entry	129	km³	Storage	17.04.2018 10:00:00
17.04.2018	21760	Spain - Litoral	Storage	Replenishment Entry	129	km³	Storage	17.04.2018 10:00:00
17.04.2018	21760	Spain - Litoral	Storage	Replenishment Entry	129	km³	Storage	17.04.2018 10:00:00
17.04.2018	21760	Spain - Litoral	Storage	Replenishment Entry	129	km³	Storage	17.04.2018 10:00:00

- Strengthen the base; enhance data quality and processing
- Extend the scope: geographical (Eastern Europe) and data coverage for storages & LNG
- Scale up business model with and for customers



Try it for free!

register now at

<https://my.appygas.com/auth/signup>

and use appygas for free during one month



Thank you !

appygas.com