

SYSTEM CAPACITY MAP 2024

Entso-gas | Avenue de Cortenbergh 100 1000 Brussels - BELGIUM
T: +32 2 299 51 00
Twitter @EntsoGas | info@entso-gas.eu
www.entso-gas.eu

GIE | Avenue de Cortenbergh 100 1000 Brussels - BELGIUM
T: +32 2 299 51 00
Twitter @GIEEurope | info@gie.eu
www.gie.eu

- ### KEYS
- Map points
 - Trading Points / Hub / Market Areas
 - Grid nodes
 - Cross border interconnector point with third country (import/export)
 - LNG Terminal every port
 - LNG Export Terminal
 - Small-scale LNG Reception point
 - Virtual Point
 - Cross border Europe
 - Cross border Europe (under construction / planned)
 - Cross border third country import/export
 - LNG Import Terminal
 - LNG Export Terminal
 - Under construction / Planned
 - LNG Import Terminal
 - Under construction / Planned
 - Small-scale LNG Reception point
 - Under construction / Planned
 - Third country cross border
 - Transport by pipeline
 - >= 24" and 30"
 - 24" and 30"
 - >= 36" and over
 - not operational
 - LNG
 - Transport by tanker
 - LNG route
 - LNG route prospect
 - Gas Reserve areas
 - oil field
 - drilling platform
 - Acquirer
 - Salt cavity - cavern
 - Depleted field on shore / offshore
 - Other type
 - Gas storage projects
 - Countries
 - EU Countries
 - Other Countries

The System Capacity Map 2024 presents existing gas infrastructure and capacity information for January 2024. Data presented in the capacity matrix were obtained from the ENTSG members and approved by gas TSOs on December 2023. Cross border capacities within countries sharing the same balancing zone (Denmark-Sweden and Estonia-Latvia) are not considered.

The 2022 / 2023 historical data on gas demand and supply are presented aggregated on the form of 15 days (using data during summer 2022 and winter 2022/2023) to allow the analysis of gas storage usage - these data are available in the ENTSG Summer and Winter Review Reports.

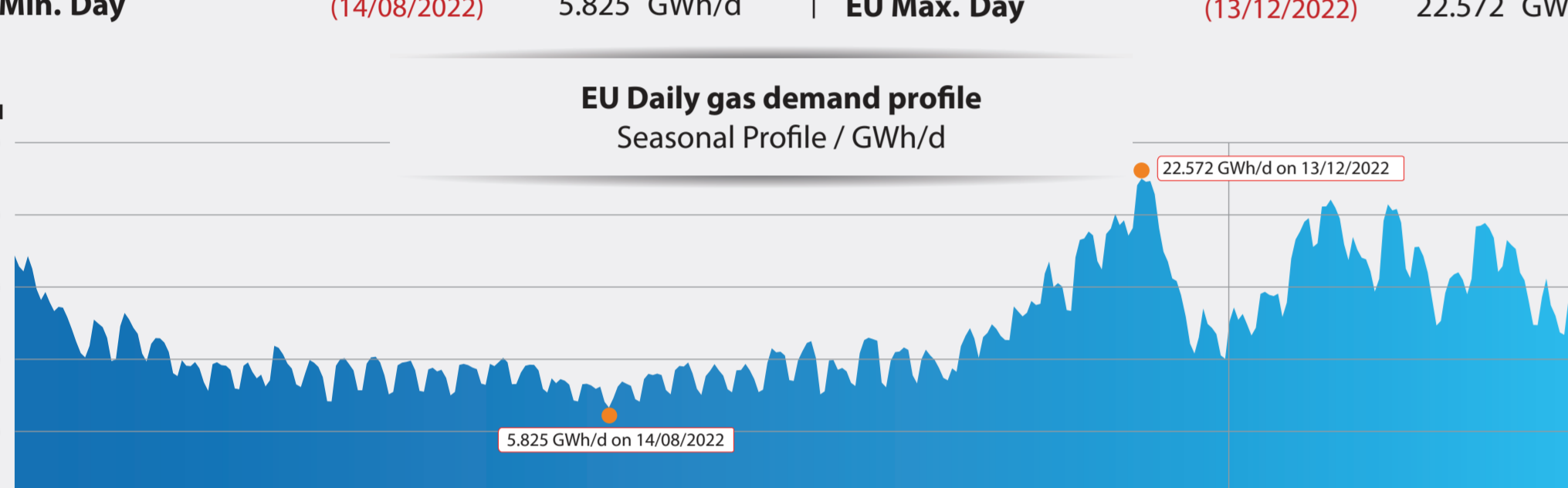
Information regarding the gas storage fill rate was obtained from GIE A-GIS platform.

The Country Profiles include demand data that represent actual country demand for the day / periods shown. Storages and LNG capacities were obtained from GIE A-GIS / A-GIS platform according to the interconnection to the country's transmission system. Installed gas-fired power generation capacity was obtained from ENTSG E-Transparency Platform. The gas production data reflects the maximum deliverability achieved.

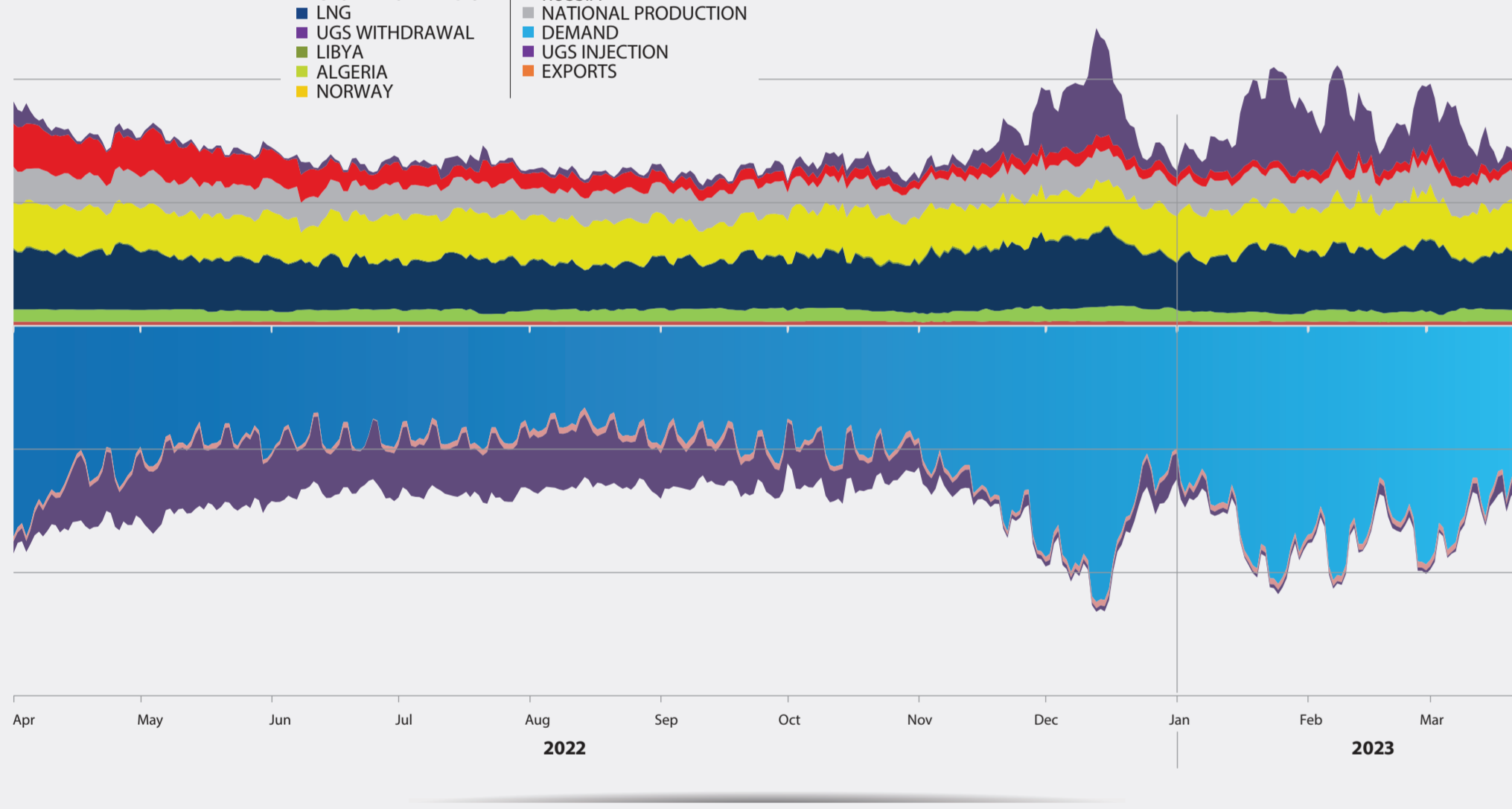
All data provided on this map is for information purposes and shall be treated as indicative and non contractual in nature, without pre-empting different outcomes of any possible discussion held at regional level.

Under no circumstances shall be regarded as information intended for commercial use.

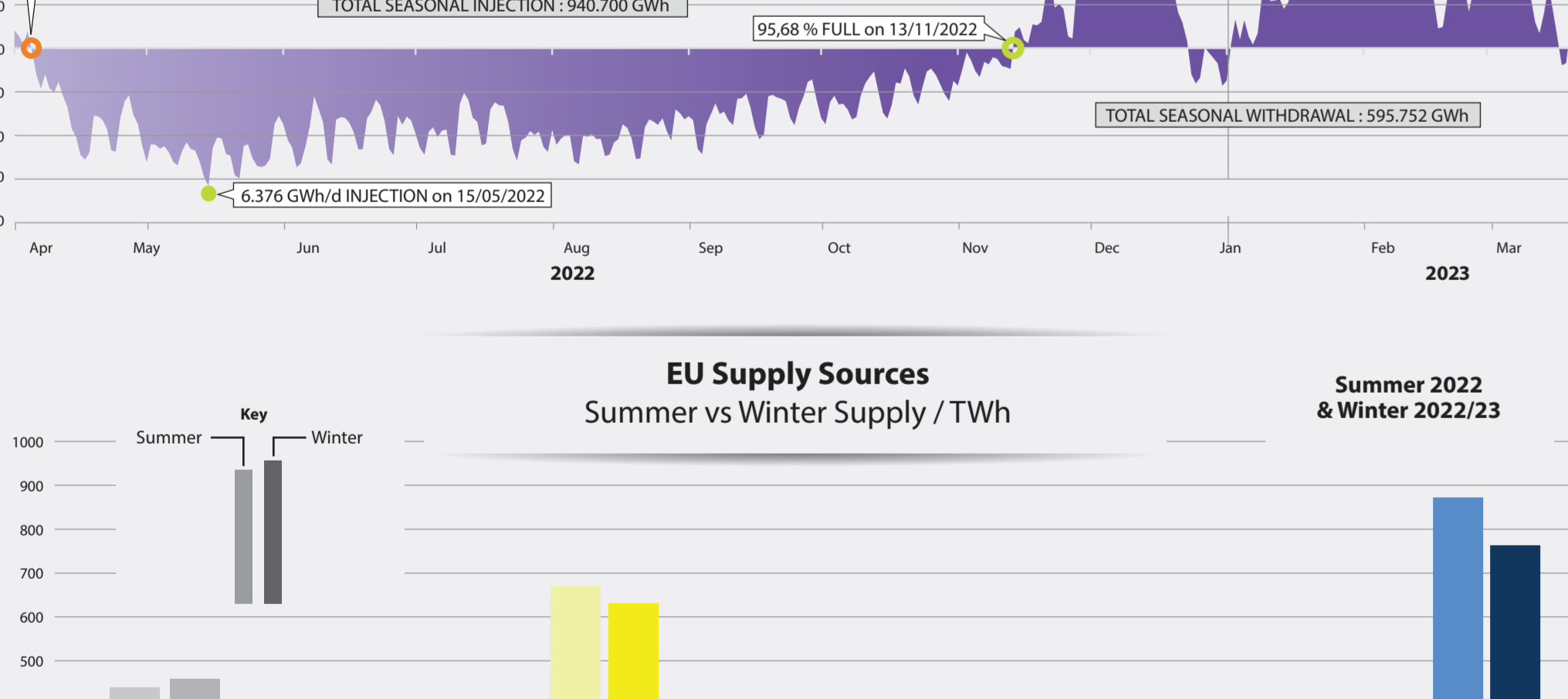
EUROPEAN DEMAND



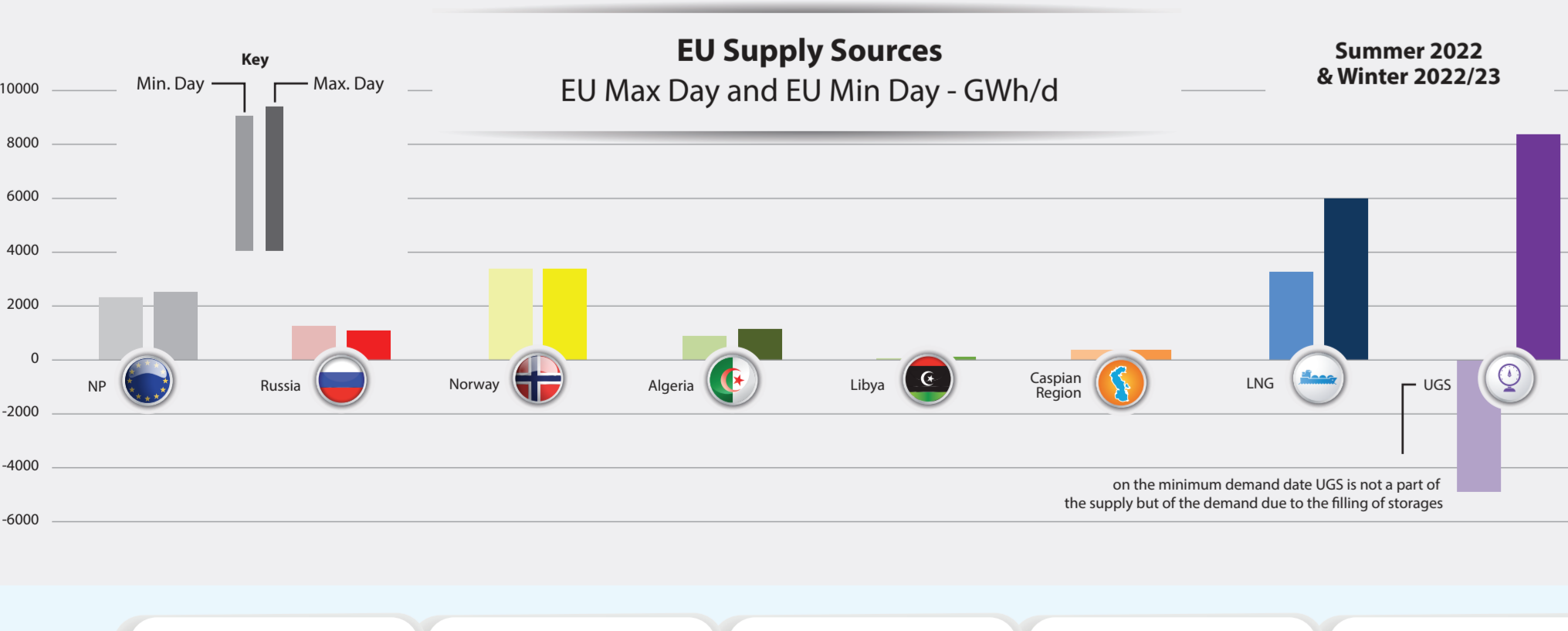
EUROPEAN SUPPLY & DEMAND



EU Supply Sources



EU Supply Sources



Country	Total 2022	Summer 2022	Winter 2022/23	EU Max Day	EU Min Day
Austria	12,110 GWh	1,150 GWh	11,000 GWh	278 GWh/d	5 GWh/d
Belgium	18,110 GWh	1,150 GWh	17,000 GWh	278 GWh/d	5 GWh/d
Bosnia-Herz.	12,110 GWh	1,150 GWh	11,000 GWh	278 GWh/d	5 GWh/d
Bulgaria	12,110 GWh	1,150 GWh	11,000 GWh	278 GWh/d	5 GWh/d
Croatia	12,110 GWh	1,150 GWh	11,000 GWh	278 GWh/d	5 GWh/d
Czech Republic	12,110 GWh	1,150 GWh	11,000 GWh	278 GWh/d	5 GWh/d
Denmark	12,110 GWh	1,150 GWh	11,000 GWh	278 GWh/d	5 GWh/d
Estonia	12,110 GWh	1,150 GWh	11,000 GWh	278 GWh/d	5 GWh/d
Finland	12,110 GWh	1,150 GWh	11,000 GWh	278 GWh/d	5 GWh/d
France	12,110 GWh	1,150 GWh	11,000 GWh	278 GWh/d	5 GWh/d
N. Macedonia	12,110 GWh	1,150 GWh	11,000 GWh	278 GWh/d	5 GWh/d
Germany	12,110 GWh	1,150 GWh	11,000 GWh	278 GWh/d	5 GWh/d
Greece	12,110 GWh	1,150 GWh	11,000 GWh	278 GWh/d	5 GWh/d
Hungary	12,110 GWh	1,150 GWh	11,000 GWh	278 GWh/d	5 GWh/d
Ireland	12,110 GWh	1,150 GWh	11,000 GWh	278 GWh/d	5 GWh/d
Italy	12,110 GWh	1,150 GWh	11,000 GWh	278 GWh/d	5 GWh/d
Latvia	12,110 GWh	1,150 GWh	11,000 GWh	278 GWh/d	5 GWh/d
Lithuania	12,110 GWh	1,150 GWh	11,000 GWh	278 GWh/d	5 GWh/d
Luxembourg	12,110 GWh	1,150 GWh	11,000 GWh	278 GWh/d	5 GWh/d
Netherlands	12,110 GWh	1,150 GWh	11,000 GWh	278 GWh/d	5 GWh/d
Poland	12,110 GWh	1,150 GWh	11,000 GWh	278 GWh/d	5 GWh/d
Portugal	12,110 GWh	1,150 GWh	11,000 GWh	278 GWh/d	5 GWh/d
Romania	12,110 GWh	1,150 GWh	11,000 GWh	278 GWh/d	5 GWh/d
Serbia	12,110 GWh	1,150 GWh	11,000 GWh	278 GWh/d	5 GWh/d
Slovakia	12,110 GWh	1,150 GWh	11,000 GWh	278 GWh/d	5 GWh/d
Slovenia	12,110 GWh	1,150 GWh	11,000 GWh	278 GWh/d	5 GWh/d
Spain	12,110 GWh	1,150 GWh	11,000 GWh	278 GWh/d	5 GWh/d
Sweden	12,110 GWh	1,150 GWh	11,000 GWh	278 GWh/d	5 GWh/d
Switzerland	12,110 GWh	1,150 GWh	11,000 GWh	278 GWh/d	5 GWh/d
United Kingdom	12,110 GWh	1,150 GWh	11,000 GWh	278 GWh/d	5 GWh/d

Import & Transmission Capacity

1 January 2024 (GWh/d) (Lesser Rule applied - Lowest value submitted by cross border TSO)

CA	DZ	EG	ES	FR	GR	HR	HU	IT	LT	LV	MD	NL	PL	PT	RO	RS	SI	SK	UA	UK		
AT																					2,134	
BA																					65	
BE	669	488	1,127																		2,045	
BG																					794	
CH																					1,010	
CZ																					2,023	
DE	997	1,231	1,628																		2,621	
DK																					215	
EE																					75	
ES	780	1,940	2,220																		245	
FI																					55	
FR	390	235	575																		3,545	
GR																					120	
HR																					131	
HU																					1,770	
IE																					307	
IT	1,154	603	494																		2,116	
LT																					103	
LV																					75	
MA																					90	
MD																					32	
NL																					55	
NO																					56	
PL	22	22	22																		144	
PT	964	964	1,839																		590	
RO	200	227	252																		202	
RS																					114	
RU																					1,551	
SI																					109	
SK																					250	
UA																					4	
UK																					437	

Cross-Border Capacities

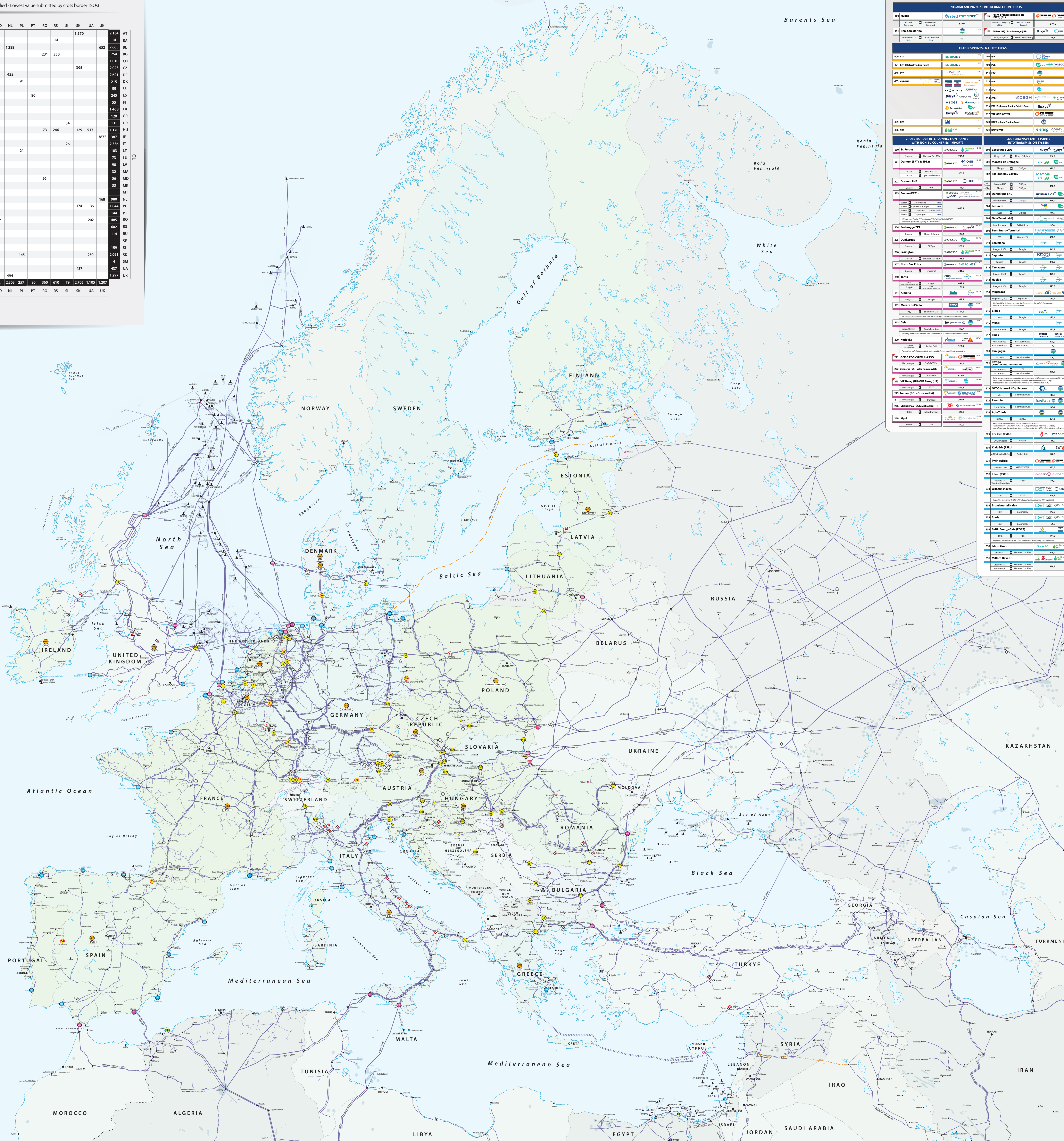
Table with columns: From, To, Capacity (000 GWh/d)

001 Zeebrugge IZT (Interconnector: Fluxys Belgium, Capacity: 651.7)

000 Virtual point (System Capacity: available during summer months)

Data collection related to the situation on 1st of January 2024. Current capacity data can be found at <https://transparency.entso-gas.eu>

For more info: [QR Code]



ENTSG AND NON-ENTSG CROSS-BORDER INTERCONNECTORS WITH NON-EU COUNTRY IMPORT

Line Name	Direction	Capacity (GWh/d)	TSO
AT-DE	AT to DE	1,231	ENTSG
BE-DE	BE to DE	1,231	ENTSG
DE-RO	DE to RO	1,231	ENTSG
FR-ES	FR to ES	1,231	ENTSG
GR-TR	GR to TR	1,231	ENTSG