



ACER Consultation to ENTSOG on the Tariff Template

8 May, 2017

[Draft]

Deadline for ENTSOG's response:

8 June, 2017

ACER CONSULTATION TEMPLATE [TARIFF NC ARTICLE 26(5)]

Commented [IO1]: Colour code:
Yellow – high priority comments related to Element 3 and Question 2 of ACER's document
Grey – low priority comments/typos
Green – other comments not related to Elements and Questions of ACER's document

ACER Consultation to ENTSOG

Following the Commission Regulation (EU) 2017/460 of 16 March 2017 establishing a Network Code on Harmonised transmission tariff structures for gas (hereinafter 'TAR NC'), the Agency for the Cooperation of Energy Regulators (hereinafter 'The Agency') is consulting European Network of Transmission System Operators for Gas (hereinafter 'ENTSOG') on the template for the consultation of Article 26 as laid out in Article 26(5).

The current document provides the structure and content of the template that will be implemented in the form of an online tool to which national regulatory authorities (hereinafter 'NRAs') and transmission system operators (hereinafter 'TSOs') will have access to. Such implementation will take place after ENTSOG's response to this consultation in order to allow time to consider the comments submitted to the Agency in response to this consultation.

Comments from ENTSOG can be provided in this same document using Microsoft Word balloons or on a separate document.

The template includes the following elements on which the Agency is consulting with ENTSOG:

- **On the procedure.** The Agency is proposing an online tool which will include a template on the consultation on the reference price methodology. This online tool will allow the NRA/TSO responsible for the national consultation to create its own pdf summary after completing the template. This summary could be included in the national consultation document, as an Annex. Independently of this decision, the Agency plans to publish all received templates, as part of its analysis on the national consultations.
- **On the submission of the online template to the Agency:** The online template tool will be the means by which the Agency collects the national consultation documentation. For this purpose, the Agency will provide guidelines to the NRA/TSO on the format of the files to submit.
- **On the content of the template:** The template requests information based on three different categories:
 - Consultation requirements based on Article 26.
 - Explanations to the consultation requirements based on Article 26
 - Requests for references in the national consultation document.

In addition the Agency would like ENTSOG to answer on the following matters:

- **Will ENTSOG recommend TSOs to include the resulting template as part of their consultation?**
- **Are the consultation requirements based on Article 26, as it is laid out in this template, in line with the ENTSOG's understanding of the article?**

Legal basis

Following the publication of the TAR NC, the Agency has developed a template for the periodic consultation of the reference price methodology. In doing so, it fulfils the obligation laid out in Article 26(5) of the TAR NC according to which, *the Agency shall develop a template for the consultation document referred to in Article 26(1) of the TAR NC. This template shall be made available to NRAs and TSOs before 5 July 2017.*

The template is made available for the consultation(s) on the reference price methodology (hereinafter 'RPM') based on Article 26(1) of the TAR NC. The NRAs and TSOs can structure this process as a single consultation or as multiple consultations followed by a final consultation. In either case, the final consultation shall comply with all the requirements set out in Article 26 and in Article 27. The final consultation shall compile the previous consultation document(s) and shall be forwarded to the Agency. The template has been designed for the purpose of the final consultation, which shall be forwarded to the Agency.

Article 27 defines the timeline to be followed for the consultation(s), the involvement of the Agency, and the NRA decision-making process. **The deadline for the publication of tariffs according to the TAR NC is 31st May 2019.**

Use of the template

This section outlines how to use the template to render it an effective tool in the national consultation process and beyond it. Independently of the use that the NRA/TSO makes of the template, the TSO/NRA running the consultation on the RPM should not deviate from the intent of Chapter VII of the Tariff NC and from the minimum consultation requirements provided in Article 26.

The template will be made available to NRAs and TSOs no later than 5 July 2017 and will be available on the Agency's website as an online tool. It will provide, in a structured manner, the full list of the requirements of Article 26, which are subject to the national consultation(s) on the RPM. When using the template, the NRA/TSO responsible for the consultation on the RPM, should provide the indicated information as defined in Article 26, be it descriptions, justifications, figures or references to the consultation document(s). In the cases where Article 26 requests elements to be consulted that are effectively not used for the calculation of the RPM, the template allows the NRA/TSO to use the field 'not applicable' while explaining the reasons for the non-applicability of the field. In addition to requesting information related to Article 26, the template will allow the NRA or TSO responsible for the consultation to provide relevant details of the consultation process, such as the closing date of the consultation, the publication dates of the responses to the national consultation, and the contact details of those in the NRA/TSO responsible for running the consultation. The latter will serve for any communication needs arising from the process described in Article 27.

Upon filling in the requested information laid out in the online template tool, the NRA/TSO will be able to also access a filled version of template in PDF format, which will contain a summary of the information submitted in the tool with the appropriate references to the national consultation document(s). This PDF document can be included as an annex to the national consultation. Independently of the NRA/TSO decision to publish this document, the Agency will include the completed templates as part of its analysis and conclusions on the RPM consultations.

Based on Article 27(1) the final consultation on the RPM shall be forwarded to the Agency. The online template tool will allow the NRA/TSO responsible for the consultation to send the consultation documents to the Agency via a secure submission procedure.

Commented [IO2]: In addition, there are different publication deadlines foreseen by Art. 29 (information to be published before the annual yearly capacity auction) and by Art. 30 (information to be published before the tariff period). Not all information is published before 31 May 2019.

Once the Agency has received the consultation documentation, it shall analyse whether all the information referred to in Article 26(1) has been published in the consultation of the RPM by the NRA/TSO, in line with Article 27(2)(a). For assessing the completeness of the consultation, the Agency will use the template, both as a summary and as a guide to reviewing the national consultation documentation.

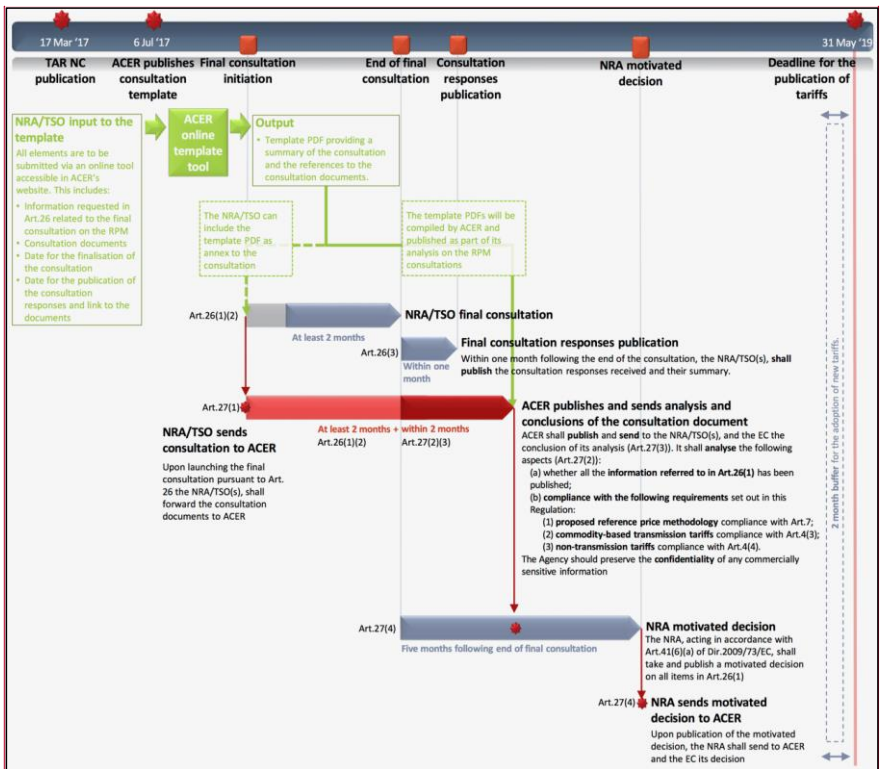
Following its review on the completeness of the national consultations, the Agency will assess the RPMs along the criteria set out in Article 27(2)(b). For this purpose, the template provides guidance on how the Agency will evaluate the relevant points of Article 26.

Furthermore, additional descriptions in the template clarify the obligations laid down under Article 26 and under other referred articles. These are always provided in non-coloured cells, so as to differentiate them from those cells that are laid out in the TAR NC. These additional descriptions clarify the text of the TAR NC and are not meant to constitute additional legal requirements.

Within two months following the end of the consultation on the RPM, according to Article 27(3), the Agency shall publish the conclusion of its analysis.

The Agency will consider the template as a publication tool creating transparency across the consultations on RPMs that provides stakeholders with an instrument to compare the national consultation documents. The Agency therefore encourages all TSOs/NRAs to use the template.

The consultation process along with the role of the template is outlined in the figure below:



Commented [IO3]: 1/ second red point: change 6 July to 5 July
 2/ first left green box: the first two bullet points overlap as the national consultation document includes information in Art. 26
 3/ same: not clear what 'link to the documents' means –is it the final national consultation documents?
 4/ grey and blue arrow: not clear why the arrow is split in two parts

Deviation is possible in line with the Code requirements ('GB Case')

National legislations allow users and TSOs to propose alternative options that will be subject to the national consultation. When foreseen, these alternatives are part of the final consultation and require a different structure from the one provided in this template. In such cases, the Agency asks the TSO/NRA to provide in the template the nature of the deviation and the additional references in the national consultation documentation where the alternative design options can be found. In cases where a full-fledged alternative is provided, the TSO/NRA should consider filling in the template in full.

Submission of the final consultation to Agency

The Agency requests the NRA/TSO responsible for launching the final consultation on the RPM to follow the below requirements when submitting the consultation documentation to the Agency:

- All files containing numerical data should be provided to the Agency in non-protected Excel or Excel compatible files independently of how they are published in the consultation.
- Files containing text should be provided to the Agency in Word, Word compatible files, or PDF.
- Files containing images should be provided to the Agency in a commonly used image formats or PDF.
- All data should be provided in non-protected files that allow editing. If PDFs are used, they should not be protected against editing (e.g.: coping)
- Confidential information shall be marked clearly as confidential. A non-confidential version of such information shall be also provided as part of the documentation.

Commented [IO4]: This is not required by the TAR NC. How are you supposed to provide a non-confidential version of confidential information

Reading the template

The elements of the template are laid out according to the following criteria. These rules will be followed when implementing the online version template.

| | | |
|---|--|-------------------------------------|
| Blue-coloured cells replicate the text of the Tariff NC and provide references to articles of the Tariff NC. | | |
| [A] Red numbering is not based on the Tariff NC. | | |
| Blue side cells provide references to articles. | Non-coloured cells provide: <ul style="list-style-type: none">• Descriptions and clarifications on the text of the Tariff NC.• References to consultation document(s) | Grey-coloured cells group by topic. |

References to the consultation document(s)

The template request references to the consultation document(s) per item of Article 26. These references should include:

- Name of consultation document referred.
- Section / page of the consultation document where the relevant information can be found.

[A] ART. 26(1)(A):PROPOSED REFERENCE PRICE METHODOLOGY

[1] Information on the parameters used in the proposed RPM related to technical characteristics of the transmission system [Art. 26(1)(a)(i), Art. 30.(1)(a)]:

Provide the information on the parameters listed in Article 30(1)(a)(i-v) when they are an input to the proposed RPM or to the CWD methodology. For parameters that are not an input to neither of the two, mark as 'Not applicable' and provide an explanation for the non-use of the parameter in the RPMs.

[A] Description of the proposed reference price methodology.
 Include a reference to, at least, the following elements:

- Choice of RPM
- Cost drivers of the RPM
- Locational signals in E/E points resulting of the RPM (e.g.: capacity, distance). Locational signals are price levels that send incentives to network users in order for the network operators to achieve an efficient operation and/or expansion of the gas system. If not applicable, indicate.
- Entry/exit split. Cost reflectivity and application to the RPM.
- Capacity/commodity split. Cost reflectivity and application to the RPM.
- Secondary adjustments (benchmarking, equalisation and rescaling). Secondary adjustments (benchmarking, equalisation and rescaling).
- Use of inter-TSO compensation mechanism. Brief note on the application of the RPM in multi-TSO E/E system and reference to the inter-TSO compensation mechanism consultation. Only if applicable.

Reference to consultation document(s):
 Click here to enter text.

Description:
 Click here to enter text.

[B] Justification of the parameters and how they are used in the RPM
 Justify the selection and use of parameters listed in Art. 30(1)(a)(i-v) as an input of the RPM in view of the technical characteristics of the transmission system.

Reference to consultation document(s).
 Click here to enter text.

| Articles | [C] Technical capacity at entry and exit points. Values | Associated assumptions |
|----------------------------------|--|--|
| Articles 26(1)(a)(i) 30(1)(a)(i) | Provide information when the parameter is an input to the RPM or to the CWD methodology. <input type="checkbox"/> Not applicable. Provide explanation. Click here to enter text. <input type="checkbox"/> Reference to consultation document(s). Click here to enter text. | <input type="checkbox"/> Not applicable. Provide explanation. Click here to enter text. <input type="checkbox"/> Reference to consultation document(s). Click here to enter text. |

| Articles | [D] Forecasted contracted capacity at entry and exit points. Values | Associated assumptions |
|-----------------------------------|--|--|
| Articles 26(1)(a)(i) 30(1)(a)(ii) | Provide information when the parameter is an input to the RPM or to the CWD methodology. <input type="checkbox"/> Not applicable. Provide explanation. Click here to enter text. <input type="checkbox"/> Reference to consultation document(s). Click here to enter text. | <input type="checkbox"/> Not applicable. Provide explanation. Click here to enter text. <input type="checkbox"/> Reference to consultation document(s). Click here to enter text. |

| Articles | [E] The quantity and the direction of the gas flow for entry and exit points. Values | Associated assumptions |
|------------------------------------|--|--|
| Articles 26(1)(a)(i) 30(1)(a)(iii) | Provide information when the parameter is an input to the RPM or to the CWD methodology. <input type="checkbox"/> Not applicable. Provide explanation. Click here to enter text. <input type="checkbox"/> Reference to consultation document(s). Click here to enter text. | <input type="checkbox"/> Not applicable. Provide explanation. Click here to enter text. <input type="checkbox"/> Reference to consultation document(s). Click here to enter text. |

| Articles | [F] Structural representation of the transmission network with an appropriate level of detail | Associated assumptions |
|-----------------------------------|---|--|
| Articles 26(1)(a)(i) 30(1)(a)(iv) | The representation should include an image of a simplified network depicting the transmission network and distinguishing the elements defined in Art. 2(1)(1) of the Regulation (EC) No 715/2009: | <input type="checkbox"/> Reference to consultation document(s). Click here to enter text. |

Commented [IO5]: General comment: ENTSOG also thinks it is useful to include in the template the following information: (1) TSO/NRA who is consulting; (2) until which date the consultation is open; (3) name IPs concerned; (4) name non-IPs concerned

Commented [IO6]: CWD outlined in Art. 8 of the TAR NC has an exhaustive list of parameters: share of transmission services revenue to be recovered from capacity-based transmission tariffs, forecasted contracted capacity at each point/cluster, the shortest distance for a point/cluster, combinations of points and entry-exit split. It is not clear why certain parameters listed here should be assessed in terms of their relevance to CWD methodology. This is already known upfront.

Commented [IO7]: The TAR NC does not foresee that there is some list of requirements for a description of the proposed RPM whereas here such list is presented as a minimum one and obligatory

Commented [IO8]: Overlap with requirements below (e.g. capacity is a cost driver, and technical/forecasted contracted capacity is captured below)

Commented [IO9]: Overlap with information included in the 'revenue' section below

Commented [IO10]: Delete – the TAR NC does not refer to adjustments as 'secondary'

Commented [IO11]: Delete – repetition

Commented [IO12]: This may be misleading, change 'in view of' to 'related to'

Commented [IO13]: Technical capacity is not an input to CWD

Commented [IO14]: Quantity and direction of the gas flow is not an input to CWD

Commented [IO15]: This is not foreseen in the TAR NC, please provide an example

| | | |
|---|---|--|
| | <ul style="list-style-type: none"> High-pressure pipelines (other than the upstream pipeline network). High-pressure pipelines primarily used in the context of local distribution of natural gas, with a view to its delivery. TSO-DSO interface (exit points). <p>The representation should be accompanied by an explanation of the criteria used for the simplification (e.g.: clustering and average distances)</p> <p><input type="checkbox"/> Reference to consultation document(s). Click here to enter text.</p> | |
| Articles 26(1)(a)(i) 30(1)(a)(v) | <p>[G] Additional technical information about the transmission network, such as: the length and the diameter of pipelines and the power of compressor stations</p> <p>Provide pipeline pressure levels when available. Provide information when the parameter is an input to the RPM or to the CWD methodology.</p> <p><input type="checkbox"/> Not applicable. Provide reasoning. Click here to enter text.</p> <p><input type="checkbox"/> Reference to consultation document(s). Click here to enter text.</p> | <p>Associated assumptions</p> <p><input type="checkbox"/> Not applicable. Provide reasoning. Click here to enter text.</p> <p><input type="checkbox"/> Reference to consultation document(s). Click here to enter text.</p> |
| Articles 26(1)(a)(i) 30(1)(a)(i) | <p>[H] Other information on the parameters used in the proposed RPM related to technical characteristics of the transmission system [Art. 26(1)(a)(i), Art. 30(1)(a)]:</p> <p>Provide information when the parameter is an input to the RPM or to the CWD methodology.</p> <p><input type="checkbox"/> Not applicable. Provide reasoning. Click here to enter text.</p> <p><input type="checkbox"/> List of other parameters (if relevant). Click here to enter text.</p> <p><input type="checkbox"/> Reference to consultation document(s). Click here to enter text.</p> | <p>Associated assumptions</p> <p><input type="checkbox"/> Not applicable. Provide reasoning. Click here to enter text.</p> <p><input type="checkbox"/> Reference to consultation document(s). Click here to enter text.</p> |
| [2] The value of the proposed adjustments for capacity-based transmission tariffs pursuant to Article 9 [Art. 26(1)(a)(ii)]: | | |
| Articles 26(1)(a)(ii) 9(1) | <p>[A] Proposed discount(s) at entry points from and exit points to storage facilities</p> <p><input type="checkbox"/> Not applicable</p> <p><input type="checkbox"/> Yes, namely: Click here to enter text.% at entry points from storage facilities and Click here to enter text.% at exit points to storage facilities compared to the initial result of the RPM</p> <p><input type="checkbox"/> Information on storage facilities that are connected to more than one EE-System. Indicate file or reference: Click here to enter text.</p> <p><input type="checkbox"/> Other file or reference (e.g. different discounts for different products at the same storage facilities). Indicate: Click here to enter text.</p> | |
| Articles 26(1)(a)(ii) 9(2) | <p>[B] Proposed discount(s) at entry points from LNG facilities</p> <p><input type="checkbox"/> Not applicable</p> <p><input type="checkbox"/> Yes, namely: Click here to enter text.% at entry points from LNG facilities.</p> <p><input type="checkbox"/> Other file or reference. Indicate: Click here to enter text.</p> | |
| Articles 26(1)(a)(ii) 9(2) | <p>[C] Proposed discount(s) at entry points from and exit points to infrastructure developed with the purpose of ending the isolation of Member States</p> <p><input type="checkbox"/> Not applicable</p> <p><input type="checkbox"/> Yes, namely: Click here to enter text.% at entry points from and exit points to infrastructure developed with the purpose of ending the isolation of Member States and Click here to enter text.% at exit points from and exit points to infrastructure developed with the purpose of ending the isolation of Member States compared to the initial result of the RPM.</p> <p><input type="checkbox"/> Other file or reference. Indicate: Click here to enter text.</p> | |
| [3] Indicative reference prices subject to consultation [Art. 26(1)(a)(iii)] | | |
| Article 26(1)(a)(iii) | <p>[A] Indicative reference prices at each entry and at each exit point</p> <p><input type="checkbox"/> Reference to consultation document(s). Click here to enter text.</p> | |
| [4] Cost allocation assessment [Art. 26(1)(a)(iv), Art.5] | | |

Commented [IO16]: This is not foreseen in the TAR NC, please provide an example

Commented [IO17]: This is not foreseen in the TAR NC

Commented [IO18]: This is not an input to CWD methodology

Commented [IO19]: Change to 'transmission or distribution network' to align with the TAR NC

Commented [IO20]: Delete

Commented [IO21]: Delete

| | | |
|--|---|---|
| Articles 26(1)(a)(iv) 5 | [A] Results of the cost allocation assessment | |
| | Capacity cost allocation assessment | Commodity cost allocation assessment |
| | <input type="checkbox"/> Capacity cost allocation comparison index: Click here to enter text.% | <input type="checkbox"/> Commodity cost allocation comparison index: Click here to enter text.% |
| | [B] Components of the cost allocation assessment | |
| | Capacity cost allocation assessment | Commodity cost allocation assessment |
| | Components of the calculation <input type="checkbox"/> Reference to consultation document(s). Click here to enter text. | Components of the calculation <input type="checkbox"/> Reference to consultation document(s). Click here to enter text. |
| [C] Details of components of the cost allocation assessment | | |
| Capacity cost allocation assessment | Commodity cost allocation assessment | |
| Description of the calculation, including: • Details of the cost drivers following Art.5(1)(a). • Rationale for the combination of capacity cost drivers. • Where the result of the capacity cost comparison index exceeds 10%, provide the justification for such results. | Description of the calculation, including: • Details of the cost drivers following Art.5(1)(b). • Rationale for the combination of commodity cost drivers. • Where the results of the commodity cost comparison index exceeds 10%, provide the justification for such results. | |
| <input type="checkbox"/> Reference to consultation document(s). Click here to enter text. | <input type="checkbox"/> Reference to consultation document(s). Click here to enter text. | |

Commented [IO22]: This is not in the TAR NC

Commented [IO24]: This is not in the TAR NC

Commented [IO23]: NRA has to provide such justification in decision post consultation only, it is not required to consult on this

Commented [IO25]: Idem

[5] Assessment of the proposed reference price methodology in accordance to Art.7 and Art. 13 of the Regulation (EC) No 715/2009 [Art. 26(1)(a)(v)].

ACER will assess the compliance of the RPM against the set of principles laid out in Art. 7 [Art.27(2)(b)(1)]. Quantitative analyses and stakeholder support will be taken by ACER as evidence for the assessments. When this is not available, compliance will be reviewed based on the explanations provided. The following points provide a non-exhaustive list of suggestions to follow in the assessment.

Commented [IO26]: Is this required from TSOs/NRAs?
This is not in the TAR NC

| | |
|---|---|
| Articles 26(1)(a)(v) 7 13 [Reg. (EC) No 715/2009] | [A] The assessment should: enable network users to reproduce the calculation of reference prices and their accurate forecast. |
| | The description of the RPM, together with the rest of element listed in this template should be instrumental to allow replicating the calculation of reference prices. Provide the manner and the order in which these elements are used for the calculation of the RPM. <input type="checkbox"/> Provide the reference to the consultation document(s): Click here to enter text. |
| | [B] The RPM shall into account the actual costs incurred for the provision of transmission services considering the level of complexity of the transmission network. |
| | The assessment should evaluate the cost reflectivity of the RPM in view of the technical characteristics of the transmission system. The assessment can be based on elements such as: • How does the technical characteristics of the transmission system influence the choice of RPM? • Is the use or non-use of locational signals related to the characteristics of the transmission system? • How does the choice of E/E split affect the cost reflectivity of reference prices? • How do reference prices at E/E points relate to the underlying costs of the network? • Indicate any other elements of the RPM relevant to assess the cost reflectivity of the RPM <input type="checkbox"/> Provide the reference to the consultation document(s): Click here to enter text. |
| | [C] The RPM shall ensure non-discrimination and shall prevent undue cross-subsidisation including by taking into account the cost allocation assessments set out in Article 5. |
| | Evidence for the assessment should take into account the cost allocation assessment. <input type="checkbox"/> Provide the reference to the consultation document(s): Click here to enter text. |
| [D] The RPM shall ensure that significant volume risk related particularly to transports across an entry-exit system is not assigned to final customers within that entry-exit system. | |
| The assessment should explain how the variation in transit flows affects reference prices for final consumers. The assessment can be based on elements such as: • The contribution of the E/E split to the risk bared by final consumers. • Are there any ex-ante splits of revenues for the purpose of transit do domestic and cross border users? <input type="checkbox"/> Provide the reference to the consultation document(s): Click here to enter text. | |
| [E] The RPM shall ensure that the resulting reference prices do not distort cross-border trade. | |

Commented [IO27]: Elements

Commented [IO28]: It should be clarified that the list is non-exhaustive and not obligatory. This is not in the TAR NC

Commented [IO29]: Overlap in [A] regarding the choice of RPM

Commented [IO30]: This is not clear, the calculations and result of the CAA is enough

Commented [IO31]: This is not clear, delete 'transit do'

| | |
|---|---|
| | <p>The assessment should refer at least to the effect of the E/E split on cross-border trade</p> <p><input type="checkbox"/> Provide the reference to the consultation document(s): Click here to enter text.</p> |
| <p>[6] Comparison with the CWD methodology (Art. 8) Accompanied by the indicative reference prices subject to consultation set out in Art.26(1)(a)(iii).</p> | |
| <p>Articles 26(1)(a)(vi) Article 8</p> | <p>[A] Where the proposed reference price methodology is other than the capacity weighted distance reference price methodology detailed in Article 8, a comparison between both methodologies should be performed.</p> <p>The comparison of the proposed RPM and the CWD methodology can be performed based on the following non-exhaustive list:</p> <ul style="list-style-type: none"> • Reference prices resulting from each methodology. • Technical characteristics of the transmission system. • Principles laid out in Art. 7. • Cost allocation assessment in Art. 5. <p>Provide the same parameters and assumptions used for the CWD as for the proposed RPM, highlighting the differences, if any. When the parameters used for each of the methodologies are different, indicate and follow through the differences in outcomes.</p> <p><input type="checkbox"/> Provide reference to consultation document(s): Click here to enter text.</p> |
| <p>Articles 26(1)(a)(vi) 8</p> | <p>[B] Indicative reference prices at each entry point and at each exit point using the CWD detailed in Article 8.</p> <p><input type="checkbox"/> Reference to consultation document(s). Click here to enter text.</p> |

Commented [IO32]: Self-contradictory: is this an obligation or an example?

Commented [IO33]: Instead of this non-exhaustive list, ENTSOG suggests having a free text explaining why CWD is not suitable for a given system

Commented [IO34]: Overlap with [B] below and [3] above

Commented [IO35]: It is not clear how to use this for comparison purposes, technical characteristics are already described above

Commented [IO36]: The only difference is when it is a completely different parameter as suggested in the next sentence

Commented [IO37]: This is not clear, proposal to change to 'reference prices'

[B] ALLOWED REVENUE OF THE TSO [ART. 26(1)(B)]

Commented [IO38]: Add 'or target'

[7] Indicative information set out in Article 30(1)(b)(i), (iv), (v).

| | |
|--|---|
| Articles 26(1)(b) 30(1)(b)(i) | <p>[A] Allowed or target revenue, or both, of the transmission system operator.</p> <ul style="list-style-type: none">• If allowed and target revenue are both used, provide detail for each case.• In the case of multiple TSOs, use the 'Description' field to indicate this and to provide the reference where the information on allowed or target revenue for each TSO can be found.• Units: currency/year <p><input type="checkbox"/> Description Click here to enter text.</p> <p><input type="checkbox"/> Reference to consultation document(s). Click here to enter text.</p> |
| Articles 26(1)(b) 30(1)(b)(iv) | <p>[B] Transmission services revenue.</p> <ul style="list-style-type: none">• Units: currency/year <p><input type="checkbox"/> Description: Click here to enter text.</p> <p><input type="checkbox"/> Reference to consultation document(s). Click here to enter text.</p> |
| Articles 26(1)(b) 30(1)(b)(v)(1) | <p>[C] Capacity-commodity split.</p> <p>Breakdown between the revenue from capacity-based transmission tariffs and the revenue from commodity-based transmission tariff.</p> <p><input type="checkbox"/> Revenue from recovered from <u>capacity-based</u> transmission tariffs: Click here to enter text.%</p> <p><input type="checkbox"/> Revenue from recovered from <u>commodity-based</u> transmission tariffs: Click here to enter text.%</p> <p><input type="checkbox"/> Reference to consultation document(s). Click here to enter text.</p> |
| Articles 26(1)(b) 30(1)(b)(v)(2) | <p>[D] Entry-exit split.</p> <p>Breakdown between the revenue from capacity-based transmission tariffs at all entry points and the revenue from capacity-based transmission tariffs at all exit points.</p> <p><input type="checkbox"/> Revenue from capacity-based transmission tariffs at <u>all entry points</u>: Click here to enter text.%</p> <p><input type="checkbox"/> Revenue from capacity-based transmission tariffs at <u>all exit points</u>: Click here to enter text.%</p> <p><input type="checkbox"/> Reference to consultation document(s). Click here to enter text.</p> |
| Articles 26(1)(b) 30(1)(b)(v)(3) | <p>[E] Intra-system/cross-border split.</p> <p>Breakdown between the revenue from domestic network users at both entry points and exit points and the revenue from cross-border network users at both entry points and exit points calculated as set out in Article 5.</p> <p><input type="checkbox"/> Revenue <u>from domestic</u> network users at entry points and exit points: Click here to enter text.%</p> <p><input type="checkbox"/> Revenue <u>from cross-border</u> network users at entry points and exit points: Click here to enter text.%</p> <p><input type="checkbox"/> Reference to consultation document(s). Click here to enter text.</p> |

Commented [IO39]: This only applies if it is NRA who consults in a multi-TSO entry-exit system

Commented [IO40]: Clarify that the split is of the transmission services revenue

Input for the cost allocation assessment Articles 5 and 26(1)(a)(iv)

Commented [IO42]: Clarify that the split is of the transmission services revenue

Commented [IO41]: Only applicable for intra-system/cross-border split

Commented [IO43]: Clarify that the split is of the transmission services revenue

[C] INFORMATION ON COMMODITY BASED AND NON-TRANSMISSION TARIFFS [ART. 26(1)(C)]

[8] Flow based charge. Information on commodity-based transmission tariffs referred to in Article 4(3):

| | |
|---------------------------------------|---|
| Articles 26(1)(c)(i)(1) 4(3)(a) | [A] The manner in which they are set. Provide the following information: <ul style="list-style-type: none"> • Description, rationale and extent to which commodity-based tariffs are used. • Formula with cost drivers for monetary terms / in kind. • Reference used for the calculation (historical flows, forecasted flows or both) • Confirm that the flow based charge is set in such a way that it is the same at all entry points and the same at all exit points. <input type="checkbox"/> Not applicable. Provide explanation: Click here to enter text. <input type="checkbox"/> Description: Click here to enter text. <input type="checkbox"/> Reference to consultation document(s). Click here to enter text. |
| | [B] The share of the allowed or target revenue forecasted to be recovered from such tariffs. <input type="checkbox"/> Not applicable <input type="checkbox"/> Share of transmission service revenue (allowed or target revenue) to be recovered by flow based charges: Click here to enter text. <input type="checkbox"/> Reference to consultation document(s). Click here to enter text. |

Commented [IO44]: No added value with capacity/commodity split above

| | |
|---------------------------------------|--|
| Articles 26(1)(c)(i)(2) 4(3)(a) | [B] The share of the allowed or target revenue forecasted to be recovered from such tariffs. <input type="checkbox"/> Not applicable <input type="checkbox"/> Share of transmission service revenue (allowed or target revenue) to be recovered by flow based charges: Click here to enter text. <input type="checkbox"/> Reference to consultation document(s). Click here to enter text. |
|---------------------------------------|--|

Commented [IO45]: Allowed/target revenue is more than transmission services revenue (unless there are no non-transmission services)

| | |
|---------------------------------------|--|
| Articles 26(1)(c)(i)(3) 4(3)(a) | [C] The indicative flow-based charge. <input type="checkbox"/> Not applicable. <input type="checkbox"/> Description: Click here to enter text. <input type="checkbox"/> Reference to consultation document(s). Click here to enter text. |
|---------------------------------------|--|

Commented [IO46]: Charges

[9] Complementary revenue recovery charge: Information on commodity-based transmission tariffs referred to in Article 4(3):

| | |
|---------------------------------------|--|
| Articles 26(1)(c)(i)(1) 4(3)(b) | [A] The manner in which they are set. Provide the following information: <ul style="list-style-type: none"> • Description, rationale and the extent to which complementary revenue recovery charge is used. • Formula with drivers <input type="checkbox"/> Not applicable. Provide explanation: Click here to enter text. <input type="checkbox"/> Description: Click here to enter text. <input type="checkbox"/> Reference to consultation document(s). Click here to enter text. |
| | [B] The share of the allowed or target revenue forecasted to be recovered from such tariffs. <input type="checkbox"/> Not applicable. <input type="checkbox"/> Share of transmission service revenue (allowed or target revenue) to be recovered by complementary revenue recovery charges: Click here to enter text. <input type="checkbox"/> Reference to consultation document(s). Click here to enter text. |

Commented [IO47]: No added value with capacity/commodity split above

Commented [IO48]: Cost drivers?

| | |
|---------------------------------------|---|
| Articles 26(1)(c)(i)(2) 4(3)(b) | [B] The share of the allowed or target revenue forecasted to be recovered from such tariffs. <input type="checkbox"/> Not applicable. <input type="checkbox"/> Share of transmission service revenue (allowed or target revenue) to be recovered by complementary revenue recovery charges: Click here to enter text. <input type="checkbox"/> Reference to consultation document(s). Click here to enter text. |
|---------------------------------------|---|

Commented [IO49]: Allowed/target revenue is more than transmission services revenue (unless there are no non-transmission services)

| | |
|---------------------------------------|--|
| Articles 26(1)(c)(i)(3) 4(3)(b) | [C] The indicative complementary revenue recovery charge. <input type="checkbox"/> Not applicable. <input type="checkbox"/> Description: Click here to enter text. <input type="checkbox"/> Reference to consultation document(s). Click here to enter text. |
|---------------------------------------|--|

Commented [IO50]: Charges

[10] Information on non-transmission services provided to network users:

| | |
|--|---|
| <p>Articles 26(1)(c)(ii)(1) 4(1)</p> | <p>[A] Non-transmission service tariff methodologies; Provide: <ul style="list-style-type: none"> List of services considered as non-transmission service on the basis of the criteria laid out in Art. 4(1). Users to which each of the non-transmission services applies. Explanation of the non-transmission tariff methodology provided per service. <input type="checkbox"/> Not applicable. Provide explanation: Click here to enter text. <input type="checkbox"/> Description: Click here to enter text. <input type="checkbox"/> Reference to consultation document(s). Click here to enter text.</p> |
| <p>Article 26(1)(c)(ii)(2)</p> | <p>[B] Share of the allowed or target revenue forecasted to be recovered from such tariffs; Provide details per type of non-transmission service. <input type="checkbox"/> Not applicable <input type="checkbox"/> Share of the allowed or target revenue forecasted to be recovered from non-transmission service tariffs. Click here to enter text. <input type="checkbox"/> Reference to consultation document(s): Click here to enter text.</p> |
| <p>Article 26(1)(c)(ii)(3) 17(3)</p> | <p>[C] The manner in which the associated non-transmission services revenue is reconciled as referred to in Article 17(3); How is the reconciliation done? Is there a separate account used for this purpose? <input type="checkbox"/> Not applicable <input type="checkbox"/> Description: Click here to enter text.</p> |
| <p>Article 26(1)(c)(ii)(4)</p> | <p>[D] Indicative non-transmission tariffs for non-transmission services to network users; Provide formula and description if used. <input type="checkbox"/> Not applicable. <input type="checkbox"/> Formula and description: Click here to enter text. <input type="checkbox"/> Reference to consultation document(s). Click here to enter text.</p> |

Commented [IO51]: The TAR NC foresees that in some cases it is not possible to identify the beneficiary

Commented [IO52]: The TAR NC requires it for all non-transmission services together

Commented [IO53]: In addition, there can be other options: (1) use of regulatory account; (2) split of regulatory account in sub-accounts

[D] COMPARED TARIFFS AND TARIFF MODEL [ART. 26(1)(D)]

[11] The indicative information set out in Article 30(2)

Whenever data is not available at the time of the consultation of the RPM, provide the date and the source where the information will be available.

| | | |
|--------------------------------------|--|---|
| Articles 26(1)(d) 30(2)(a)(i) | <p>[A] Comparison between transmission tariffs applicable for:</p> <ul style="list-style-type: none"> • prevailing tariff period, and for • tariff period for which the information is published. <p>Explain the difference between the level of transmission tariffs</p> <p>Comparison of values and explanation to be based on transmission tariffs.</p> <p><input type="checkbox"/> Reference to consultation document(s). Click here to enter text.</p> <p><input type="checkbox"/> Link to information on TSO/NRA website. Click here to enter text.</p> | Comparison with past tariff period |
| Articles 26(1)(d) 30(2)(a)(ii) | <p>[B] Comparison between transmission tariffs applicable for</p> <ul style="list-style-type: none"> • tariff period for which the information is published, and for • each tariff period within the remainder of the regulatory period. <p>Estimated difference in the level of transmission tariffs.</p> <p>Comparison of values and explanation to be based on transmission tariffs.</p> <p><input type="checkbox"/> Reference to consultation document(s). Click here to enter text.</p> <p><input type="checkbox"/> Link to information on TSO/NRA website. Click here to enter text.</p> | Comparison with upcoming tariff periods |
| Articles 26(1)(d) 30(2)(b) | <p>[C] At least a simplified tariff model, updated regularly, enabling network users to calculate the transmission tariffs applicable for the prevailing tariff period and to estimate their possible evolution beyond such tariff period.</p> <p>The simplified tariff model should serve for the calculation of tariffs. If the information on multipliers and seasonality is not available at the time of the publication of the consultation on the RPM, it should be indicated. By the time this information is published, the simplified tariff model should be updated to include information on tariffs.</p> <p><input type="checkbox"/> Reference to consultation document(s). Click here to enter text.</p> <p><input type="checkbox"/> Link to information on TSO/NRA website. Click here to enter text.</p> | Tariff model for prevailing tariffs and future tariff periods |
| Articles 26(1)(d) 30(2)(b) | <p>[D] Explanation of how to use the simplified tariff model</p> <p><input type="checkbox"/> Reference to consultation document(s): Click here to enter text.</p> | |

Commented [I054]: In such case, the model will only capture the reference prices. As the consultation per Art 26 and per Art 28 are carried out at the same time, it is not clear when multipliers and SF will not be available. Please note that in any case these tariffs are indicative.

[E] FIXED PAYABLE PRICE UNDER PRICE CAP REGIME [ART. 26(1)(E)]

[12] Where the fixed payable price referred to in Art.24(b) is offered under a price cap regime for existing capacity

| | |
|-----------------------|---|
| Article 26(1)(e)(i) | <p>[A] Provide proposed index</p> <p>Provide index, components of the index if used.</p> <p><input type="checkbox"/> Not applicable. Provide explanation: Click here to enter text.</p> <p><input type="checkbox"/> Description: Click here to enter text.</p> <p><input type="checkbox"/> Reference to consultation document(s). Click here to enter text.</p> |
| Article 26(1)(e)(ii) | <p>[B] Provide proposed calculation for the risk premium</p> <p>Calculation of the index if used.</p> <p><input type="checkbox"/> Not applicable</p> <p><input type="checkbox"/> Description: Click here to enter text.</p> <p><input type="checkbox"/> Reference to consultation document(s). Click here to enter text.</p> |
| Article 26(1)(e)(ii) | <p>[C] How is the revenue derived from the risk premium used?</p> <p><input type="checkbox"/> Not applicable</p> <p><input type="checkbox"/> Description: Click here to enter text.</p> <p><input type="checkbox"/> Reference to consultation document(s). Click here to enter text.</p> |
| Article 26(1)(e)(iii) | <p>[D] At which IPs is such approach is proposed?</p> <p>Provide IP name and ID if used.</p> <p><input type="checkbox"/> Not applicable</p> <p><input type="checkbox"/> Description: Click here to enter text.</p> <p><input type="checkbox"/> Reference to consultation document(s). Click here to enter text.</p> |
| Article 26(1)(e)(iii) | <p>[E] For which tariff period(s) such approach is proposed?</p> <p><input type="checkbox"/> Not applicable</p> <p><input type="checkbox"/> Description: Click here to enter text.</p> <p><input type="checkbox"/> Reference to consultation document(s). Click here to enter text.</p> |
| Article 26(1)(e)(iv) | <p>[F] The process of offering capacity at an IPs where both fixed and floating payable price approaches referred to in Article 24 are proposed</p> <p>Provide details on the offering process if used.</p> <p><input type="checkbox"/> Not applicable</p> <p><input type="checkbox"/> Description: Click here to enter text.</p> <p><input type="checkbox"/> Reference to consultation document(s). Click here to enter text.</p> |